

"30 INSPIRING COMMUNITY BASED TOURISM EXPERIENCES AROUND THAILAND"



switchasia 

Funded by
the European Union



Warm welcome to Thai Community Based Tourism

Thailand is one of the world's leading destinations offering hands-on, local community experiences.

Sincerely welcoming local people, vibrant living cultures, delicious local food, and a rich tapestry of artistic and natural heritage provide the foundations of countless, inspiring and fun local Thai tours.

However, local community tours do not guarantee local community benefits. Designing balanced village tours, which impress visitors, while benefiting local community members, requires skills, time and effort.

Fortunately, Thailand has over 30 years of experience, building the skills and confidence of local community members to develop, manage and operate Community-based Tourism (CBT) programs, which balance a great experience for visitors, with benefits for local people and the environment:

For over 20 years, in communities across Thailand, hundreds of local community members have been trained to welcome visitors to their communities; manage tourism; share their stories; and earn income through offering food, accommodation, activities, guiding services, etc. **Thailand is a world leader in CBT.**

Under the EU SWITCH ASIA Thai Tourlink project, 5 leading CBT development organizations joined forces to identify 30 Community Based Tourism villages with interest and potential to welcome European visitors.

- Designated Areas for Sustainable Tourism Administration (DASTA)
- Thai Ecotourism and Adventure Travel Association (TEATA)
- Thailand Community Based Tourism Institute (CBT-I) and
- Thailand Responsible Tourism Association (TRTA), plus
- The Dutch NGO Fair Tourism Foundation

This directory presents the highlights of these communities:

- Name of community
- Location
- Highlights of the community
- CBT Activities
- Sustainability Highlights
- Contact

Contact details to the communities are provided, for your existing Thai DMC partner to request further details. If you do not currently have a Thai DMC partner, or you need help with ground arrangements, DASTA can also recommend expert local Thai tour operators, located close to these communities.

To ensure the best experiences for visitors and communities, we recommend that tour operators familiarize sales teams about the experiences, prepare travelers with good pre-departure information and guidelines; and train professional tour guides how CBT is different from regular village excursions, and how to work alongside local community members to deliver a respectful and successful experience for all.

Contact the DASTA team at: cbt.enhancement@gmail.com

This document has been produced with the financial assistance of the European Union. The contents of this document are the sole responsibility of Tourlink Project Partners and can under no circumstances be regarded as reflecting the position of the European Union.



31 local Thai communities

31 local worlds to explore!



NO.1	BANG KO BUA COMMUNITY	SAMUTPRAKARN
NO.2	BANG NAM PHUENG COMMUNITY	SAMUTPRAKARN
NO.3	BAN KHOK MUEANG COMMUNITY	BURIRAM
NO.4	BAN CHAROEN SUK COMMUNITY	BURIRAM
NO.5	TAKIEN TIA COMMUNITY	CHONBURI
NO.6	BAN NONG CHAK NGEAW COMMUNITY	CHONBURI
NO.7	PRA SAE COMMUNITY	RAYONG
NO.8	THALE NOI RAYONGHE COMMUNITY	RAYOING
NO.9	BAN NAM CHIAO COMMUNITY	TRAT
NO.10	BAN THA RA NAE COMMUNITY	TRAT
NO.11	MUANG KAO SUKHOTHAI COMMUNITY	SUKHOTHAI
NO.12	NONG O COMMUNITY	SUKHOTHAI
NO.13	KOK SATHON COMMUNITY	LOEI
NO.14	PHU LUANG COMMUNITY	LOEI
NO.15	NAI WIANG COMMUNITY	NAN
NO.16	BO SUAK COMMUNITY	NAN
NO.17	BAN RAI KONG KHING COMMUNITY	CHIANG MAI
NO.18	TAI LUE MUANG LUANG NUEA COMMUNITY	CHIANG MAI
NO.19	U-THONG COMMUNITY	SUPHAN BURI
NO.20	THUNG PRADU COMMUNITY	PRACHUAP KHIRI KHAN
NO.21	MUEANG PHET COMMUNITY	PHETBURI
NO.22	MUANG KLUANG COMMUNITY	RANONG
NO.23	BANG RONG COMMUNITY	PHUKET
NO.24	PHUKET OLD TOWN COMMUNITY	PHUKET
NO.25	BAAN BANGTAO COMMUNITY	PHUKET
NO.26	BAN KHA NAEN COMMUNITY	PHUKET
NO.27	BAN KHOK KHRAI COMMUNITY	PHUKET
NO.28	BAN SAM CHONG NUEA COMMUNITY	PHUKET
NO.29	BAN NA TIN COMMUNITY	KRABI
NO.30	LAEM SAK COMMUNITY	KRABI
NO.31	HUAY PU KENG	MAE HONG SON

MAP OF CBT

Ban Rai Kong Khing Community, Chiang Mai

Tai Lue Muang Luang Nuea Community, Chiang Mai



Huay Pu Keng, Mae Hong Sorn

Nong O Community, Sukhothai

Muang Kao Sukhothai Community, Sukhothai



U-Thong Community, Suphan Buri



Mueang Phet Community, Phetchaburi

Thung Pradu Community, Prachuap Khiri Khan



Muang Kluang Community, Ranong

Bang Rong Community, Phuket
Phuket Old Town Community, Phuket

Baan Bangtao community, Phuket
Ban Kha Naen Community, Phuket

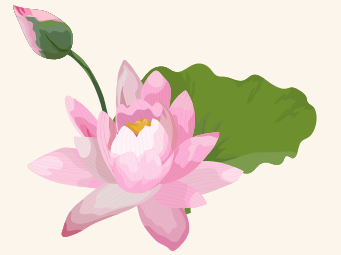
Nai Wiang Community, Nan

Bo Suak Community, Nan



Kok Sathon Community, Loei

Phu Luang Community, Loei



Ban Khok Mueang Community, Buriram

Ban Charoen Suk Community, Buriram

Bang Ko Bua Community, Samut Prakan

Bang Nam Phueng Community, Samut Prakan

Takien Tia Community, Chonburi

Ban Nong Chak Ngeaw Community, Chonburi



Ban Nam Chiao Community, Trat

Ban Tha Ra Nae Community, Trat

Pra Sae Community, Rayong

Thale Noi Rayonghe Community, Rayong



Ban Khok Khrai Community, Phang Nga

Ban Sam Chong Nuea Community, Phang Nga

Ban Na Tin Community, Krabi

Laem Sak Community, Krabi



BANG KO BUA COMMUNITY SAMUTPRAKARN

LOCATION

Bang Ko Bua is located in the Northeastern part of Phra Pradaeng District, Samut Prakan Province, Central Thailand, and can be reached easily from Bangkok

“Bang Ko Bua” is named after beautiful, flowering lotuses which thrive in the lowland area. In the past, a small canal called Khlong Phae connected Bang Ko Bua to Khlong Toei port. Today, the canal is no longer a major trade route, but still provides beautiful insights into Thai life on the waterways.

THE HIGHLIGHTS OF BANG KO BUA COMMUNITY

Your chance to be immersed in traditional, Central Thai canal side life, on a boat trip along the scenic Khlong Phae Canal. On the way, witness vibrant living culture along the canal banks, and reconnect with nature, as you drift through Nipa palm tunnels. Enjoy the healthy local menu of Salt Chili Lotus Wraps and Crunchy Coconut Shrimp Curry! Delicious!

CONTACT

NAME: MR. SITTHIPONG PHUTHAVORN
ADDRESS: BANG KO BUA SUB-DISTRICT, PHRA PRADAENG DISTRICT,
SAMUT PRAKAN 10130
PHONE NUMBER: +66 90 986 7987
EMAIL: ANAKPHU@GMAIL.COM
FACEBOOK: [HTTPS://WWW.FACEBOOK.COM/PROFILE.PHP?
ID=100031927603952](https://www.facebook.com/profile.php?id=100031927603952)

SOURCE:

[HTTPS://CBTTHAILAND.DASTA.OR.TH/WEBAPP/REVIEWTRAVEL/CONTENT/](https://cbtthailand.dasta.or.th/webapp/reviewtravel/content/)
[HTTPS://CBTTHAILAND.DASTA.OR.TH/WEBAPP/COMMUNITY/CONTENT/1/](https://cbtthailand.dasta.or.th/webapp/community/content/1/)



CBT ACTIVITIES

1. EXPERIENCE THE BANG KO BUA WAY OF LIFE, JOINING A SCENIC BOAT TRIP ALONG THE LOCAL WATERWAYS
2. LEARN HOW TO MAKE FRESH HERBAL COMPRESSES
3. INDULGE IN NATURE AND ENJOY DELICIOUS SNACKS
4. CYCLE, AND ENJOY THE FRESH AIR, STOPPING TO PAY RESPECT TO THE REVERED MONK, LUANG PU MU
5. VISIT THE BAN KHLONG BON MUSEUM AND TOUCH LOCAL HISTORY THROUGH ITS ANTIQUE COLLECTION
6. TASTE DELICIOUS DISHES MADE FROM "CRUNCHY COCONUT," A HARD TO FIND LOCAL INGREDIENT!
7. GET HANDS ON! MAKE YOUR VERY OWN UNIQUE TIE-DYE FABRICS FROM NATURAL DYES
8. ENJOY A HERBAL FOOT SPA FOR RELAXATION

SUSTAINABILITY HIGHLIGHTS

THE AREA OF BANG KO BUA IS WELL KNOWN AS A SOURCE OF TRADITIONAL THAI HERBS. COMMUNITY MEMBERS HARNESSSED THEIR RESOURCES TO CRAFT A RICH VARIETY OF TOURISM ACTIVITIES, FOODS AND PRODUCTS. AS A RESULT, LOCAL COMMUNITY MEMBERS HAVE, ADDED VALUE TO THEIR LOCAL 'GOOD THINGS'; INCREASED THEIR INCOME; AND PRESERVED CULTURAL AND NATURAL RESOURCES.

THE COMMUNITY HAS ALSO DEVELOPED LOW-CARBON TOURISM ACTIVITIES INCLUDING USING NATURAL DYE COLOUR, PLANTING TREES, AND COLLECTING WASTE IN THE CANAL TO REDUCE THE ENVIRONMENTAL IMPACTS OF TOURISM. VISITORS CAN BE SURE THAT WHEN VISITING BANG KO BUA, YOU ARE A PART OF SUSTAINABLE TOURISM WITH THE COMMUNITY, WHILE HAVING A SUPER FUN DAY!



BANG NAM PHUENG COMMUNITY SAMUTPRAKARN

LOCATION

Bang Nam Phueng is located in the west of the Bang Kachao area, known as 'the lungs of Bangkok.'

This green oasis is nestled across the Chao Phraya River from Bangkok, with views of the capital's hyper-urban skyline, while preserving a relaxed, rural vibe!

Bang Nam Phueng community was established 200 years ago. Most of the locals are Central Thai and Mon and Chinese. This gives the area a lively and diverse atmosphere. Fun fact...This area is also known as 'Krapaw Moo' or Pig Stomach because of its shape!

Highlights of Bang Nam Phueng Community

At Bang Nam Phueng Floating Market, visitors will gain insights into local Thai lifestyles, enjoy eating local food, shopping for local products, and talking with local people,

A highlight of the community program is cycling through this beautiful oasis, along the emerald bike route. At night, don't miss a boat ride to see fireflies sparkle in the night sky!

CONTACT

Name: Mr. Somsak Samleerat

Address: Bang Nam Phueng Sub-District, Phra Pradaeng District, Samut Prakan 10130

Phone Number: +66 89 440 3362

Source:

<https://cbtthailand.dasta.or.th/webapp/recommendedRoute/content/3/>

<https://cbtthailand.dasta.or.th/webapp/community/content/3/>



CBT ACTIVITIES

1. At Ban Chan Rong Stingless Bee House, learn about beekeeping, hives and honey collection. Try your hand making local products from honey. E.g. soap and cream
2. Cook up Thai coconut milk custard at Mae Prakong House
3. Peddle the Emerald Bike Route along historic ways of life
4. Get insights into Thai Buddhism through temple visits, and 'make merit' for an auspicious future at Phra Maha Mondop Chedi Sri Nakhon Khuen Khan, Bang Nam Phueng Nok Temple, and Bang Nam Phueng Nai Temple!
5. Visit the Village #4 Community Forest and Agricultural Learning Center to learn about local natural resources
6. Enjoy a boat ride to see fireflies light up the night!

Sustainability highlights

Bang Nam Phueng community members have set their hearts on the crossroads of conservation and agriculture. At the Agricultural Learning Center, visitors can see the results of their hard work, including diverse ornamental plants from the Large Ornamental Plant Group of Phra Pradaeng District, such as Cordyline, Croton (more than 100 species) as well as various types of cactus.

There is also a group of beekeepers in the Chan Rong Bang Nam Phueng Sub-district. Visitors can learn about beekeeping, hive extension, honey collection as well as the process of making soap and shower gel. Visitors can also support the local community by purchasing various products, snacks, beverages and therapeutic honey products. This shows that the community can preserve their natural resources through agricultural tourism and create income from high value agricultural products.



BAN KHOK MUEANG COMMUNITY

BURIRAM PROVINCE

LOCATION

Ban Khok Muang is an ancient, traditional community in Buriram province, in North Eastern Thailand. In the past, this community prospered due to its location on rich, volcanic soil. Nowadays, farmers formed a group to grow jasmine rice on the volcanic soil. The rice has a particularly fragrant aroma.

The Highlights of Ban Khok Mueng Community

Ban Khok Muang is home to Prasat Hin Muang Tum, a stone castle, dating back to Khmer civilization. Ban Khok Muang is also famous for its lustrous silk, woven with a unique pattern based on 'Pak Kood', a local vegetable.

Dinner is an event! Travelers join Hope By La Nguyet (dinner) where a worship ceremony and 'Rum Apsara' traditional dance show are held.

Visitors also have the chance to meet local 'Kui' people. The Kui are an ethnic minority, living a simple agricultural way of life, influenced by Khmer culture, with communities in northeast Thailand, southern Laos and Cambodia.

CBT ACTIVITIES

- 1.. Visit the Khok Muang community market, where tourists can see HRH Rama IX's Sufficiency Economy in practice, including processed herbs, organic vegetables, and watermelon.
2. Spend a night at a welcoming community homestay
3. Try savoury local dishes such as Kung Jom - shrimp chilli paste, bamboo shoot curry, Tom Yum Kai Ban – boiled chicken soup, Jaew Bong chili paste, and Khao Ji – roasted rice. Wow!
4. Try your hand cooking local menus alongside a community chef
5. Be intrigued by ancient sites at PraSat Hin Muang Tum
6. Learn how to craft cotton or silk fabrics dyed from Baray clay
7. Watch folk music and traditional dance performances.
8. You may even have a chance to grow vegetables and farm crops!

Sustainability highlights

The community uses tourism as a tool to preserve their local culture and wisdom, while increasing income. Visitors will experience sustainability in action, through their simple, welcoming lifestyle when visiting the community. In particular, presenting the skills of weaving and Tie-dye fabric from Baray clay is helping to preserve local traditions. The community follows the concept of the 'Sufficiency Economy' developed by King Rama IX. Household agricultural products are creating further, additional income for local families.



CONTACT

Name: Mr. Prasit Loyprakhon

Address: Chorakhe Mak Sub-District, Prakhon Chai District, Buriram 31140

Phone Number: +66 86 721 1789

Facebook: <https://www.facebook.com/profile.php?id=100076038619957>

Source: <https://cbtthailand.dasta.or.th/webapp/community/content/8/>

BANCHAROEN SUK COMMUNITY BURIRAM PROVINCE

LOCATION

Also located in historic Buriram province, North Eastern Thailand, Ban Charoen Suk is founded on an extinct volcanic, Khao Martian, in Chaloem Phra Kiat district.

The Highlights of Ban Charoen Suk Community

The community has unique mineral-rich volcanic soil, which has enabled community members to develop a rich, dyed cotton, called Phu Akkani Cloth. This has become a well-known local souvenir .

Phu Akkani fabric has a beautiful, soft texture and unique color - a light brown color with a reddish-brown tint from the volcanic soil. The Volcano Cloth Demonstration Center Baan Charoensuk Community awarded as an OVC village (OTOP Village Champion).

CBT ACTIVITIES

1. Visit Phu Akkani Cloth Demonstration Center
2. Meet the silk-cotton women weavers community
3. Ride a classic 'E-Tak' to Khao Phra Angkan community forest
4. Dye clothes from volcanic soil
5. Stay overnight at a welcoming community homestay



Sustainability highlights

The sustainability highlight is the successful preservation, while adding value, to local Phu Akkani fabric, with its historic process of immersion in volcanic earth. Tourism has given the local community opportunities to share and celebrate their local craft wisdom, and their achievements establishing the Volcano Cloth Demonstration Center. Visitors can learn how the community develops their local products. Product quality and uniqueness is guaranteed by the OTOP (One Tambon One Product) scheme. Villagers earn significant additional income from the center, which also supports maintaining their cultural heritage.



CONTACT

Name: Khun Somwang Phasookjai

Address: Charoen Suk Sub-District, Chaloem Phra Kiat District, Buriram 31110

Phone Number: +66 95 609 7855

Facebook: <https://www.facebook.com/phuakaneecotton/>

Source: <https://cbtthailand.dasta.or.th/webapp/community/content/7/>

TAKIEN TIA COMMUNITY CHONBURI PROVINCE

LOCATION

"Takien Tia is one of the oldest, most culturally vibrant villages in Chonburi, nearby to Pattaya. The area has plenty of water during the year so people generally make a living through rice farming, and coconut farming.

The Highlights of Takien Tia Community

The community proudly presents their "Coconut Tourism Route," where visitors can experience the local way of life through fun, hands-on activities, experiences and products related to coconut.

Highlights include riding a bicycle through a coconut farm, tasting coconut coffee and Crispy Coconut Curry with Chicken, and buying cold pressed coconut oil!

CBT ACTIVITIES

1. Try a coconut coffee, where coconut juice replaces milk!
2. Ride a bicycle around the village to get to know the local lifestyle of coconut farming; and how to peel a coconut coir!
3. Cook local menus with Mae Ban Jaidee, the friendly chef!
4. Craft Green Roses from Pandan Leaves!
5. Guasa (stone massage) Treatment Demonstration
6. Try making 'Puang Ma-Hod Hom Yom Maprao' a traditional paper pendant with Coconut-dyed Camphor Bag!



Sustainability highlights

Tourists will see how the community preserve and develop coconut farming through tourism.

In past decades, this area gradually became more industrial. Urban areas expanded, with big businesses purchasing land to establish factories.

The villagers were gradually selling their land and moving out. Traditional coconut farming was affected and decreasing. A group of Takien Tia villagers made a commitment to conserve coconut farming and local identity!

They collected and harnessed their local wisdom about coconuts; a symbol of their village, to develop new activities and tourist attractions. Takien Tia is now known as the true coconut conservation community!

The community uses community-based tourism as a tool for creating community participation through various tourism activity groups in the community. Tourism has increased income and improved quality of life for the community.

CONTACT

Name: Khun Wandee Prakorbtama

Address: Takien Tia Sub-District, Bang Lamung District, Chon Buri 20150

Phone Number: +66 98 412 1712

Email: takhiantia@gmail.com

Facebook: <https://www.facebook.com/profile.php?id=100032388806149>

Source:

<https://cbtthailand.dasta.or.th/webapp/community/content/14/>

BAN NONG CHAK NGEAW COMMUNITY CHONBURI PROVINCE

LOCATION

Chak Ngeaw is a Chaozhou Chinese community, which immigrated over a hundred years ago to Chonburi. Locals believe the word “Chak Ngeaw ” has roots in the original name of “Nong Cha Ngao”. In the past, Chak Ngeaw was considered a leading commercial district. However, the area became less central to trade, and less well known in Pattaya. In 2015, Chak Ngeaw was given a new lease of life, as the government designated Pattaya as a special municipal area.

Highlights of Nong Chak Ngeaw Community
The Walking Street at Ban Chak Ngao Local Chinese Market is a must visit in the community. Walking through the ancient door in Chak Ngeaw, feels like stepping into an atmospheric movie set!

Chak Ngeaw has many eye catching local highlights, which reflect the unique local culture and lifestyle such as hotels, movie theaters, the Jao Mae Tubtim Shrine and Chinese style buildings.

CBT ACTIVITIES

1. Experience a romantic historical ambience with The Three Kingdoms's Character Mask Drawing
2. Stroll down the walking Street at Ban Chak Ngao Local Chinese Market, soaking up the ambience
3. Try delicious local food i.e. Dried shredded pork, Kui Chai, Ba Jang, Fish Maw, Kra Lor Gee, Fried Taro, Fried Radish, Deep Fried Pork Meat Rolls, Kuang Jiang, and Mulberry Juice
4. Admire the heritage of Chinese arts, preserved in Chak Ngeaw, in both painting and building styles



Sustainability highlights

The sustainability highlight of the community is cultural preservation, which has been powerful enough to draw local youth back to work in their hometown.

The community preserves their Chinese cultural identity through food, art, and creative tourism activities.

Every weekend, the community has a walking street which sells local food, snacks, beverages, and souvenirs.

Each house prepares what they have and sells to visitors. Youth who study or work in Bangkok and nearby provinces return home to help their families. This boosts income and family relationships to the community.

CONTACT

Name: Khun Saijai Tengsuwan
Address: Huai Yai Sub-District, Bang Lamung District, Chon Buri 20150
Phone Number: +66 81 870 3398
Facebook:
<https://www.facebook.com/chakngeaw/>
Source:
<https://cbtthailand.dasta.or.th/webapp/community/content/15/>



PRA SAE COMMUNITY

RAYONG PROVINCE

LOCATION

Pak Nam Prasae community is located in Klaeng district, Rayong province, along the 26-kilometer Prasae River, which is formed by a confluence of tributaries. The Prasae River has been nourishing nearby communities and their peoples for many generations. This river gifts diverse livelihoods for the locals.

The Highlights of Pak Nam Pra Sae Community

The community has abundant natural resources and ecotourism attractions. Tung Prong Thong or the Golden Mangrove Field is a highlight. Here, visitors can witness a vast field of Prong trees, which change colour according to the direction of sunlight, for as far as the eye can see! From 11 a.m. to 3 p.m. is the best time to see the tree leaves change their color and turn the whole field to gold! Visitors can also experience life along the river bank, at the 100-Year-Old Market.

CBT ACTIVITIES

1. "Tung Prong Thong": A Nature Trail at the Golden Mangrove Field
2. Cruising along Prasae River and Enjoying the Beauty of the Gulf of Thailand
3. Rafting and Watching Brahminy Kites
4. Tasting Flavorful Local Dishes
5. Experiencing the Local Way of Life at the 100-Year-Old Market

Sustainability highlights

The community's sustainability highlight is nature conservation. "Tung Prong Thong " or the Golden Mangrove Field used to be industrial agriculture and livestock farm.

The surrounding natural resources were destroyed by forest encroachment and arson. Therefore, the Municipal Office and the local residents joined forces to rehabilitate the mangrove forest and its ecosystem. They have also built a 2-kilometer wooden walkway through the mangrove field, for the convenience of visitors to walk and explore inside the forest.

Vibrant, living culture can also be seen in the local river bank lifestyle. Tourists can hear stories of preserving both natural and cultural resources when visiting the community.

CONTACT

Name: Paknam Prasae Sub District Municipality

Address: Pak Nam Prasae Sub-District, Klaeng District, Rayong 21170

Phone Number: +66 84 088 4768, +66 85 120 8014

Email: prasae.village@gmail.com

Facebook: <https://www.facebook.com/VisitPrasae?mibextid=9R9pXO>

Source: <https://www.dasta.or.th/en/article/290>



BAN TALAY NOI COMMUNITY

RAYONG PROVINCE

LOCATION

Ban Talay Noi, meaning 'village of the small sea,' was named after sea shells found by local people, and also after the view of the estuary at high tide, which looks like a tiny sea. Ban Talay Noi is a historical tourism village, following the King Rama IX Sufficiency Economy Philosophy. Several community development projects are operating, to improve the quality of local life. Visitors can experience many activities here based on precious local wisdom, high quality local products, and local way of life, which weave into impressive travel routes for visitors.

The Highlights of Ban Talay Noi Community

Gain insight into Thai legend and history, observing how local Thais venerate the former monarch, Phra Chao Taksin, at Wat Ratcha Banlang temple, an ancient temple since the end of the Ayutthaya period. Then, dive into local life and livelihoods, including learning how to weave iconic local hats from nipa palm leaves, mangrove forest conservation, and cooking a famous local menu alongside a local chef.

CBT ACTIVITIES

1. Visit Wat Ratcha Banlang temple, to hear the legend of King Taksin and pay respect to Thailand's last rattan-structured Buddha sculpture.
2. Enjoy a traditional hat-making demonstration by Mother Somsri!
3. Meet the local architect, Aunty Aeng and see her impressive models
4. Learn how to source and cook Ban Talay Noi's specialty 'signature dishes': sun-dried salted fish, "Krachup" and other local veggie dishes
5. Shop and try delicious banana snacks
6. Hawk-feeding and rafting through the evening at the estuary.

Sustainability highlights

Ban Talay Noi is an agricultural community. Community-based tourism is used as a tool for preserving agricultural livelihoods, and adding value to farm products through various tourism activities such as agricultural processing, cooking classes, handicrafts, etc.

CONTACT



Name: Khun Preecha Sansern

Address: Thang Kwian Subdistrict, Klaeng District, Rayong 21110

Phone Number: +66 81 864 9086 Facebook:

<https://www.facebook.com/profile.php?id=100064025618200>

Source:

<https://cbtthailand.dasta.or.th/webapp/reviewTravel/content/8/>

<https://cbtthailand.dasta.or.th/webapp/community/content/17/>



BAN NAM CHIAO COMMUNITY TRAT PROVINCE



LOCATION

Ban Nam Chiao, Laem Ngop District in Trat, is famous for unity and peaceful cohabitation between two religions - Buddhists and Muslims. The population of Nam Chiao sub-district was traditionally Buddhist-Thai. First, Chinese merchants arrived to trade and sell goods at Ban Nam Chiao Pier and settled. Later, in the reign of King Rama III, Muslims, who called themselves "Khaek Cham or Champa" fled war in Cambodia to settle on the banks of the Nam Chiao Canal. Buddhists and Muslims live peacefully together in Nam Chiao with a good relationship, including inter-marriage.

Sustainability highlights

The community uses community-based tourism as a tool for environmental conservation through ecotourism and low carbon tourism activities such as planting trees in mangrove forest, upcycling shells for hand-made accessories and decorations, decreasing electricity and fuel use in cooking and solar cell crab bank. Tourists can be a part of these activities to ensure sustainability with the community.

CONTACT

Name: Khun Rosarin Wiruntho

Address: Nam Chiao Sub-District, Laem Ngop District, Trat 23120

Phone Number: +66 89 244 6702 Email: rossarin6702@gmail.com

Facebook: https://www.facebook.com/NamchiaoCommunity/?locale=th_TH

Source: <https://cbtthailand.dasta.or.th/webapp/community/content/21/>

The Highlights of Ban Nam Chiao Community

Cruise on a small boat to see the fishermen's lifestyle, stroll across the 'don't miss' Wat Jai Bridge, visit the Al-Kubro Mosque on a community tour with local guides, enjoy a demonstration of hat making from Nipa palm leaves, taste the delicious local snack, "Khao Kriap Ya Na."

CBT ACTIVITIES

1. Green your fingers, planting mangrove forest
2. Take a small boat, for insights into local fishermen's lifestyle
3. Demonstration of making Ngop Bai Chak straw hats
4. Demonstration of making crispy stick candy
5. Try your hand making rice crackers and crispy nougat
6. Enjoy local food and fresh seafood such as Ban Nam Chiao Stir-fried Noodles, Stir-fried Lamb Shell with Basil, and Hot and Sour Boiled Fish with Chili Paste, Shrimp Chili Paste



BAN THA RA NAE COMMUNITY TRAT PROVINCE

LOCATION

Ban Tha Ra Nae is a new, eco-friendly attraction in Mueang District, Trat. It has been developed, as a sustainable tourism attraction for the well-being of villagers in the community. It is an ideal place to experience ecotourism in a fertile mangrove forest, with many large trees over 100 years old.

The Highlights of Ban Tha Ra Nae Community

Visitors can take a boat cruise to visit 3 forests along the canal including mangrove forest, nipa palm forest and granatum forest "Lan Ta Bun". A highlight is seeing granatum roots woven together, into a walkable field. Another highlight is to experience Ban Tha Ra Nae lifestyle through tasting specialty "Cha Roi Ru" tea, weaving tie dye cloth from granatum fruit, and tasting the traditional dessert "Phim Khao Tok" which can only be found here in Ban Tha Ranae.

CBT ACTIVITIES

1. Visit 3 forests in the canal including mangrove forest, nipa palm forest and granatum forest
2. Releasing Crabs into the wild
3. Bamboo and Nipa Palm leaves Basketry Demonstration
4. Kan Song Leaves Basketry Demonstration
5. Ta Boon Fruit Tie Dye Making
6. Taste "Cha Roi Ru" (Hydnophytum formicarum Jack Tea)
7. Enjoy local food and dessert i.e. Shell Curry with Cha-Plu Leaves, Batter-Fried Mangrove Leaves, Roasted Jang Lon, and Sweet Rice Crackers

Sustainability highlights

Preservation of the 100-year-old fertile mangrove forest is a sustainability highlight. Tourists see how the community is sustainably developed as an ecotourism attraction for community members and everyone who wants to learn about environmental conservation through tourism, such as releasing crabs for a CSR activity. The community has developed local products to reflect their cultural and natural identities, such as handicrafts, food, desserts and beverages in order to add value and increase income for local community members.

CONTACT

Name: Khun Saichon Sunetr

Address: Nong Khan Song Sub-District, Mueang Trat District, Trat, 23000

Phone Number: +66 81 161 6694

Facebook: https://www.facebook.com/bantharanae?locale=th_TH

Source: <https://cbtthailand.dasta.or.th/webapp/community/content/22/>



MUANG KAO SUKHOTHAI COMMUNITY

SUKHOTHAI PROVINCE

LOCATION

Sukhothai Old Town community is located in the center of Sukhothai, in Sukhothai Historical Park. The park has many historical artefacts, which illustrate the greatness of Sukhothai art and civilization from 700 years ago, including the world famous Sukhothai Stone-Inscription by King Ramkhamhaeng, and many other historical sources of art, language, culture, and convention which have survived until today, including traditional community lifestyles.

Highlights of Muang Kao Community

Witness the glorious Sukhothai period, in Sukhothai Old Town community. Ride a “Rot Khok Mu”, traditional vehicle, experience a demonstration of chinaware and wood carving, and taste local dessert “Khanom Sangkhaya Chaona”.

CBT ACTIVITIES

1. Visit the Sukhothai Historical Park
2. Celadon Painting on Clothes Activity (Ban Preedabhirom)
3. Thai Auspicious Dessert Making
4. Offer food to a Buddhist monk at Trapang Thong temple in the morning and enjoy local lunch
5. Celadon Painting on Pottery
6. Palm Leaf Fish Mobile Making
7. Witness Buddha statue making at Ban Phra Pim Laksanamonsilp
8. See Handmade Clay Making



Sustainability highlights

The community uses community-based tourism as a tool for historical and cultural preservation through creative tourism activities which create value-added and tourism income to community members.

Furthermore, the community has developed a “Tourism for All” route and facilities for special assistance groups who are willing to visit the community. This shows the community thinks about everyone is staying up to date with trends!



CONTACT

Name: Khun Ponglert Chalernsiroj
Address: Mueang Kao Sub-district, Mueang Sukhothai District, Sukhothai 64210
Phone Number: 095 609 7855
Facebook: <https://www.facebook.com/profile.php?id=100064806333758>
Source:
<https://cbtthailand.dasta.or.th/webapp/community/content/30/>

NONG O COMMUNITY SUKHOTHAI PROVINCE

LOCATION

Nong Or community is located in Si Satchanalai, Sukhothai, and reflects the Yom River basin lifestyle. The community is called “Nong Or” after reed grasses (“Or” in Thai) in the Yom River basin area where the community is located. This is the home of ‘Lao Khrang’ or ‘Lao Phu Khrang’. ethnic groups, members of the Kra–Dai language family, who migrated from Phu Khrang, Luang Prabang, Laos in the reign of King Rama III. Later, after they had settled in Thailand, they were called “Thai Khrang”.

CBT ACTIVITIES

1. Learning organic farming at the Learning Center for rice seeds
2. Visiting the Chinaware Learning Center or, ‘Oven Number 82 (Taothuriang)’
3. Tasting local food from Ban Ko Noi women's group including delicious, chicken So Re curry, and Katha Taek chili paste.
4. Try your hand at Than Ta Wen Flowers Making and Flower Cone Making
5. Purchasing Thai Khrang clothes as a souvenir
6. Celadon Pottery Painting



Highlights of Nong Oh Community

Learning about the lifestyle of Thai Khrang people, including clothes dyeing and weaving Thai Khrang clothes which have colorful and exquisite designs, as well as making Than Ta Wen flowers which are beautiful decoration for local houses and for traditional ceremonies.

Sustainability highlights

The community uses community-based tourism as a tool for cultural preservation through creative tourism activities such as Than Ta Wen flowers making, Thai Khrang fabric weaving, and celadon pottery making .

These activities conserve the local wisdom of the Thai Khrang ethnic group. Younger generation is involved in the community as well. Youth participate in tourism activities such as traditional performances and local guides after finishing school and on weekends. Tourists will see cultural preservation and youth empowerment when visiting the community.

CONTACT

Name: Khun Chatchai Chumchuen
Address: Nong O Sub-District, Si Satchanalai District, Sukhothai, 64130
Phone Number: +66 88 272 8005 Email: EKaiwan.2532@gmail.com
Facebook: <https://www.facebook.com/profile.php?id=100064804062830>Source: <https://cbtthailand.dasta.or.th/webapp/community/content/28/>

KOK SATHON COMMUNITY LOEI PROVINCE

LOCATION

Koksathon is surrounded by high, steep mountains in Dansai District, Loei. The community is surrounded by abundant natural resources since the community area is neighbor to Phu Hin Rong Kla National Park.

The Highlights of Kok Sathon Community

This community is full of stories and natural wonders. Here, you can enjoy Wild Himalayan Cherry blossoms (Thai Sakura) from mid-December to February. Deep below the ground, million-year fossils and footprints of Theropoda, the flesh-eating dinosaurs were uncovered by archeologists awaiting visitors to discover this ancient land of dinosaurs. Koksathon is also renowned as an important plantation of high-quality ginger.

CBT ACTIVITIES

1. Black Sticky Rice Ice-Cream Cooking Class
2. Rice Plantation
3. Ginger Powder and Pickled Ginger Making
4. Learn a traditional Hmong lifestyle at Ban Tub Ko House
5. Taking local vehicle to see Wild Himalayan Cherry blossoms at Phu Lom Lo Mountain
6. Dinosaur trails at Man Dang waterfall
7. Enjoy local food i.e. Chicken Soup with Black Sesame, Sathorn Leaves Fermentation Sauce, Spicy Banana Flower Salad

Sustainability highlights

The community uses community-based tourism to stimulate community participation in achieving community goals, and generating income directly and indirectly in the community. This is done by providing services to tourists (e.g. transport, local products), and preserving cultural resources by creative tourism activities. The community's no waste policy when traveling to the community helps to protect the environment. Kok Sathon community also collaborates with Phu Hin Rong Kla National Park to run tourism activities, and distribute tourism income equally to all stakeholders. This supports the community's well-being and better quality of life.

CONTACT

Name: Khun Niyom Kulachai

Address: Kok Sathon Sub-District, Dan Sai District, Loei 42120

Phone Number: 093 462 8291

Email: phulomlo.koksathon@gmail.com

Facebook : <https://www.facebook.com/phulomlo.koksathon>

Source:

<https://cbtthailand.dasta.or.th/webapp/community/content/36/>

PHU LUANG COMMUNITY

LOEI PROVINCE

LOCATION

Phu Luang District is a small district in Loei Province. The community is known for agricultural tourism and ecotourism.

The Highlights of Phu Luang Community

Tourists can enjoy activities including rice farming, fruit gardening, and vegetable planting with local families in the village . This area is the source of the Loei and Pa Sak Rivers, and one of the most important wildlife sanctuaries in Thailand. Visitors can also enjoy an exotic experience riding local farm trailers along the trails in the rice fields.

CBT ACTIVITIES

1. Visit Prasat Fang : Phu Ho community check-in point, after rice harvest season, there is a lot of rice straw left, which is used for creating beautiful photo spots.
2. Banana Land: There are many bananas growing in the community, which are used for making food, such as banana snacks.
3. Phraya Chang and Nang Pom Hom Shrine: A mythical love story between elephants and people , linking with true stories of the past.
4. Visit the heart of faith in Phu Ho sub-district, Wat Non Sawang temple, birthplace of the traditional ceremony "Phaya Chang-Nang Phom Hom."
5. Join the activity transplanting rice seedlings at Nong Kork farm : Learn how to plant rice and enjoy the view of Phu Ho which is an unseen place in another beautiful area in Phu Ho subdistrict community.
6. Thai Plant Farm : See local vegetables, local fruits and sunsets after Phu Luang and the rice fields.

Sustainability highlights

The community has a youth club run by the younger generation in the community. They have developed the brand called "Banana Family" which makes a processed banana product and handicrafts such as fried banana, banana stick, eco-print bag, etc. The youth club upgraded the community to "Bananaland" where everyone can learn about bananas. The community is also planning to be a social enterprise which is a sustainable business model for distributing benefits for all community members.



CONTACT

Name: Khun Lukkana Saenboongkor

Address: Kud Pong Sub-district, Mueang Loei District, Loei 42000

Phone Number: +66 88 993 9905, +66 83 465 5539

Email: bumloei@gmail.com

Facebook: <https://www.facebook.com/99BananaLand>

Source:

<https://cbtthailand.dasta.or.th/webapp/community/content/33/>



NAI WIANG- BAN NONG TAO COMMUNITY, NAN PROVINCE

LOCATION

Nai Wiang - Ban Nong Tao, Nan Province, is a 'twin' town with exquisite Thai architecture. The two communities are located along both sides of Nan River, conserving beautiful cultures. Nai Wiang Community is the home of many ancient temples such as Wat Sri Pan Ton, Wat Noi, Wat Phra That Chang Kam, and the famous temple, Wat Phu Min.

Highlights of Nai Wiang - Ban Nong Tao Community

These are some of Thailand's most charming and best preserved, traditional urban communities. The absolute must-see attraction is the "Whispering of Love" mural painting in Wat Phu Min, which portrays an affectionate image of a man touching a woman's shoulder and whispering to her, evoking a very charming and romantic atmosphere. This image has become a symbol of Nan.

CBT ACTIVITIES

1. Visit exquisite local temples, be amazed by charming local art and sculpture, and 'make merit' in the ancient town
2. Explore vegetable farms, flower gardens, and pesticide-free pick-your-own fruit
3. Ride a tricycle and soak up the atmosphere in the old town of Nan
4. Experience the ancient wisdom of candle-making festivals
5. Join a Tua Mueang Writing Workshop : Learn about history by writing Lanna characters
6. Flower Cone Making
7. Join a local Cooking Class with local chef
8. Tung Ta King and Tung Sai Mhoo Making: It is used for performing extended life ceremonies
9. Visit and learn history at Nan National Museum
10. Khum Chao Mekwadee : A beautiful, 120-year-old house



Sustainability highlights

The community still makes a living with agricultural occupations as well as preserving cultural resources through creative tourism activities. Tourists will see how the community adds value to their local wisdom and earns income from community-based tourism to develop their quality of life.

CONTACT



Name: Khun Chutima Na Nan

Address: Nai Wiang Subdistrict, Mueang Nan District, Nan 55000

Phone Number: +66 84 046 6516

Facebook: <https://www.facebook.com/profile.php?id=100054550055336>

Source: <https://cbtthailand.dasta.or.th/webapp/community/content/41/>

BO SUAK COMMUNITY NAN PROVINCE

LOCATION

Bo Suak Community in Nan Province is a community with several well preserved archaeological sites. It is also home to a variety of art, culture and traditions.

The Highlights of Bo Suak Community

Learn about the community's lifestyle and local wisdoms through pottery making, bamboo weaving, sugarcane water processing, indigenous music and dance. See and support amazing local products, including painting, pottery, bamboo and textiles weaving with unique local patterns.

CBT ACTIVITIES

1. Huan Ban Suak San Chuen Museum: An exhibition of ancient stoves, ancient pottery, and agricultural tools from the community
2. Ban Ja Manus Ancient Kiln Site, for pottery production, especially the ancient stove that was found in the house of Cha Sip Tri ManatTi Kham.
3. Ban Saw Luang Weaving Group: See traditional production processes, from cotton spinning, dyed with natural colors, hand-woven with refinement with unique patterns.
4. Ban Pa Ka Sugar Cane Juice Making
5. Bo Suak Pottery Making : Learn how to make pottery while listening to the history of Bo Suak pottery from the locals.
6. Ban Tam Basketry Weaving
7. Thai Herbal Compress Ball Making at Um Boon Agricultural Park
8. Bo Suak Restaurant : try to cook herbal northern spicy sausage and have local food such as Ma Khaen fried chicken, Kare chicken curry, and Ban Na Yum Yon Pormuang northern green chili dip.

Sustainability highlights

The community cooperates in the conservation of natural resources, maintaining forests and water resources, as well as maintaining the traditional way of the community. Young people are actively encouraged to participate in the development of sustainable community tourism.



CONTACT

Name: Khun Suthipong Duangmaneerat

Address: Bo Suak Sub-District, Mueang Nan District, Nan 55000

Phone Number: +66 81 028 9051, +66 63 784 4456

Email: bluesky.monjuan@gmail.com

Facebook: <https://www.facebook.com/homestaybaanbosuak>

Source: <https://cbthailand.dasta.or.th/webapp/community/content/42/>

BAN RAI KONG KHING COMMUNITY CHIANG MAI PROVINCE

LOCATION

Ban Rai Kong Khing Community is located in Hang Dong District, Chiang Mai, near to Chiang Mai Night Safari and Rajapruek Royal Park, which are famous tourist attractions in Chiang Mai. The community is now well known for traditional Thai medicine. Local villagers' quest for better health led to the development of this inspiring, wellness community.

The Highlights of Ban Rai Kong Khing Community

Yum Khang is a traditional massage therapy technique that can be used to treat or heal pain in the body. The masseuse dips their feet into a sesame oil solution, steps on a heated stone, and then presses on tense body tissues of the person being massaged.

The community also offer a range of non-toxic meals from local ingredients; and have pioneered 'Suk-Siam', a local herbal brand offering a range of well recognized local wellness products, From locally-made massage oils to natural honey and organic mosquito repellents, these make great quality souvenirs for loved ones.

Sustainability highlights

Ban Rai Kong Khing was awarded a PATA Tourism Inspire Award for sustainable tourism. This award guarantees the quality of this community. Ban Rai Kong Khing village, and their brand, have developed based on local wisdom of wellness. The community also has excellent community-based tourism management in terms of income distribution and a tourism fund for uplifting quality of life and well-being.

CBT ACTIVITIES

1. Enjoy a village, organic farm tour
2. Bike a beautiful green Tree Tunnel: Take a healthy bike ride in the morning along a nature trail passing Chiang Mai Night Safari and Rajapruek Park.
3. Relax and revive with Yum Khang, traditional Lanna Thai massage therapy
4. Enjoy eating delicious Lanna food. Ban Rai Kong Khing's most well-known dishes are Ho Khao Khao Soi, Khanom Jeen Nam Ngiao, Khae Curry, Bamboo Shoot Curry, Ta Dang Paste with Steamed Vegetables, Nam Prik Num with pork rinds, Ong chilli paste, Tom Yum, and earthstar mushrooms.
5. Experience a traditional, classic 'Khan Tok' dinner, with local musical and cultural traditions, which include a performance of traditional instruments (Si Sa Lor Seo Sueng), and welcoming festivities of Lanna culture with dances and stage performances starring local aunties and children in the community.



CONTACT

อีเมล:

Email : inthachai33@gmail.com

Facebook : <https://www.facebook.com/Banraikongking/>

Name: Khun Somsak Intachai

Address: Nong Khwai Subdistrict, Hang Dong District, Chiang Mai 50230

Phone Number: +66 92 515 5652

Source: <https://cbtthailand.dasta.or.th/webapp/community/content/12/>

TAI LUE MUANG LUANG NUEA COMMUNITY CHIANG MAI PROVINCE

LOCATION

Originally, the Tai Lue people of Ban Luang Nuea lived in Sipsongpanna (a Chinese province today). They migrated to settle in Ban Luang Nuea, in Chiang Mai. The community have preserved their unique ancient wisdom, culture, language and way of life. Wat Sri Mum Muang temple is the center of the community.

The Highlights of Tai Lue Muang Nuea Community

Learning Tai Lue culture and lifestyle according to the Ban Bai Boon "Tai Lue" Cultural Center. Making handicrafts with local people, including Chiang Mai's famous rice paper, and the opportunity to pick up a 5-star OTOP wooden doll, which make a great souvenir. Don't miss trying "Khao Kab", a delicious local rice cracker, deep fried or grilled!

CBT ACTIVITIES

1. Visit Ban Bai Boon "Tai Lue" Cultural Center. The "Tai Lue" Cultural Center was established to honor and celebrate the wisdom and teachings handed down through generations of Ban Bai Boon's Tai Lue people.
2. Admire Sri Mung Mueang Temple: Luang Nuea Village's primary temple, home to a sacred traditional Burmese pagoda built in 1400 AD.
3. Try your hands at "Khao Kaep" Local dessert making, "Khao Kaep" is a snack made by finely grinding, soaking, and fermenting rice overnight before being mixed with water, salt, and black sesame. It is usually enjoyed during winter.
4. Rice paper making: At the Saa Paper Manufacturing Center, tourists can design beautiful patterns for their very own rice paper, as they desire.
5. Nai Pho Wooden Dolls : Celebrated as a 5-star OTOP product, "Nai Pho" wooden dolls are bright and colorful, making great souvenirs.

Sustainability highlights

The community has preserved their traditional ethnic Tai Lue's way of life to pass on to the younger generation, by using community-based tourism as a tool for tourism for cultural preservation and local identity. The community has built upon local wisdom and traditions, to create local products, local food and handicrafts, including certified the 5-star quality OTOP product from the Ministry of Interior.



CONTACT

Email : tailuebaanbaiboon@gmail.com

Facebook: <https://www.facebook.com/CBTTaiLueLuangnue>

Name: Mr. Nutthanaiwitt Baisukhan

Address: Luang Nuea Sub-District, Doi Saket District,
Chiang Mai 50220

Phone Number: +66 92 793 6391 Email:
tailuebaanbaiboon@gmail.com

Source:

<https://cbtthailand.dasta.or.th/webapp/community/content/39/>



U-THONG COMMUNITY SUPHAN BURI PROVINCE

LOCATION

Muang Dvaravati U-Thong is one of Thailand's most important archaeological sites, located on the west bank of Charakhe Sam Phun river, U Thong, Suphan Buri Province. The city is shaped as an ellipse, facing the northeast and the southwest is 750 meters wide, 1,650 meters long, with an area of approx. 386 acres).

The Highlights of Community

There are many ancient artifacts connected to Dvaravati culture. Visitors can enjoy a tram ride visiting various attractions including ancient boat replicas at the Suvarnabhumi Institute, Wat Khao Phra Sri Sanpetch Temple, Pu Hang Nak Stone Garden, and Pra Ya Jak Shrine.

CBT ACTIVITIES

1. Visit Uthong National Museum: a museum of history, archaeology and art history, established as a place to exhibit antiquities from archaeological operations at U Thong Ancient city. Admire especially the coloring of the big-headed dolls, taken from the faces of the Dvaravati people.
2. Place Mat Weaving Demonstration
3. Handmade Rice Pounding Demonstration
4. Sriwatsa's Coin Casting (Wichien's Coin Casting Center)
5. Herb Inhaler Demonstration: A community group that makes household herbal products, yellow oil, herbal inhalant, ancient balms.
6. Glass Beads and Stone Beads Making
7. Visit Khao Phra Local Museum
8. Enjoy eating healthy food at Ban Dong Yen
9. Have a local meal at Nong Sue Kitchen
10. Activities to string the beads in Dvaravati style at Ban Kok



Sustainability highlights

The community is involved in community-based projects through the Muang Dvaravati U-Thong community-based tourism promotion club.

The club is well-coordinated with other groups under the club to run and manage community-based tourism activities.

As the community has various tourism groups, there are many types of tourism activities that tourists can choose such as gastronomy tourism, wellness tourism, agricultural tourism, cultural tourism, historical and creative tourism.

This shows the success of the community which can add value and create income through a variety of community-based tourism offers.



CONTACT

Email: Prayoon1402@hotmail.com

Facebook: <https://www.facebook.com/uthongcbt>

Name: Khun Prayoon Asampinpong

Address: U Thong Subdistrict, U Thong District, Suphan Buri 72160

Phone Number: +66 81 851 7087

<https://cbtthailand.dasta.or.th/webapp/community/content/46/>

THUNG PRADU COMMUNITY PRACHUAP KHIRI KHAN PROVINCE

LOCATION

Thung Pradu Community is located in Thap Sakae subdistrict, Thap Sakae district, Prachuap Khiri Khan Province, en route between Hua Hin and Chumporn. A truly self-sufficient community, which has built on local wisdom to develop many interesting activities.

The Highlights of Thung Pradu Community

This community is a field learning center for organic agriculture, fisheries and other fields. Visitors can learn how to make well-known "Maprao Kati " coconut dessert.

The innovative Sand Spa will help you relieve fatigue, relax, and enjoy the relaxing atmosphere of the sea.

CBT ACTIVITIES

1. Coconut Shell Handicraft Activity
2. Sung Chuek Making (Sea Fish's Home)
3. Visit the seafood housewives' group
4. Farming and orchards at Ban Suan Wittaya
5. Experience a Sand Bath Spa
6. Cooking class to make "Anyamanee Nok Khum", a unique Thai dessert



Sustainability highlights

The community has a sand bath spa and organic farm which are wellness tourism activities. This shows that the community is concerned about the health and well-being of people. The community has done research on the sand at Thung Pradu beach. The result shows that the sand can relieve fatigue. So, tourists will get to enjoy this relaxing activity when visiting the community, while community members benefit from additional income.



CONTACT

Email: cbt.thungpradu@gmail.com

Facebook:

<https://www.facebook.com/profile.php?id=100064195950470&mibextid=9R9pXO>

Name: Ms. Suwalee Seriwattanachai

Address: Thap Sakae Subdistrict, Thap Sakae District, Prachuap Khiri Khan 77130

Phone Number: +66 81 572 9665

Source:

<https://cbtthailand.dasta.or.th/webapp/community/content/50/>

<https://www.dasta.or.th/en/article/357>

MUEANG PHET COMMUNITY PHETCHABURI PROVINCE

LOCATION

Mueang Phet lies on the Phetchaburi River bank. Here, you can find the simple way of life of this ancient community.

The Highlights of Community
Visitors can enjoy various activities and attractions such as Wat Mahathat Temple, Ban Manus Janyong house of literature, Wat Plub Pla Chai cow skin shadow puppet museum, Chinese flour cake hand painting, including an exciting activity of treasure hunting in Phetchaburi River lead by the local villagers.

CBT ACTIVITIES

1. Visit Street Art at Soi Talad Rim Nam
2. Visit Mitr Chaibancha House: house of a famous actor and a collection of old movie posters, photos, and an old film acted by Mitr Chai ban.
3. Visit Ban Manussajanyong: Manat Chan Yong is a Thai writer who is also known as "King of Short Story." He has more than 1,000 stories. He opens a house to showcase his works to tourists.
4. Visit Kamwasi Pavilion: a collection of antiques discovered under the Phetchaburi River, and there is also a cultural art show about the Meang Petch lifestyle of each era.
5. Hug Seang Seang Teung Vegetarian House: Pay homage to the old shrine, a place revered by Thais with Chinese descent in Phetchaburi.
6. Phet River Treasure Museum: Learn about history from the Phetchaburi and antique objects such as Thawa Ra Wadi water pot, antique silver coins.
7. Nang Yai Museum at Wat Phlapplachai: a rare Thai high-class performing arts. Plubplachai temple has opened a museum for people who are interested in art to learn. There is also a "Tok Kradat Lai Nang Yai", where tourists can try to make a pattern in Nung Yai models by themselves.



Sustainability highlights

The community uses community-based tourism as a tool for cultural preservation, including the celebration and preservation of local historic sites.

In 2023, Mueang Phet community received the PATA Gold Award 2023 on Culture - Traditional Performance and Visual Arts. This helps to guarantee that the community is successfully preserving their art and culture through tourism.



CONTACT

Email: Petchburicommunity@gmail.com
Facebook:
<https://www.facebook.com/muangpetchcommunity>
Name: Khun Romayakorn Erawan
Address: Khlong Krachaeng Subdistrict, Mueang Phetchaburi District, Phetchaburi 76000
Phone Number: +66 86 344 4418 Email: Petchburicommunity@gmail.com Facebook:
<https://www.facebook.com/muangpetchcommunity>
Source:
<https://cbtthailand.dasta.or.th/webapp/community/content/47/>
<https://smartdastaapp.dasta.or.th/place/1600?lang=th>

MUANG KLUANG COMMUNITY RANONG PROVINCE

LOCATION

Muang Kluang Subdistrict Community is located in Ranong province. Locals are mainly fishermen, fishing for soft-shelled crabs, blue crabs, squid and other abundant marine life in the area. The ocean here is abundant, beautiful, and clean, along with big and small islands nearby as well as fertile mangrove forests.

Most people in this community are Muslim. They live a simple life. There are still many livestock grazing in a wide field, and also cashew farms for welcoming visitors who are loving various natural ways of life.

Highlights of Muang Kluang Community

The highlight activity is going rafting along the Lat Nod canal and visit numerous points of interest along the way. Tourists will learn the local ecosystem and will be a part of environmental preservation through planting mangrove trees.

CBT ACTIVITIES

1. View the local ecosystem from locally-made boats
2. Try local seafood delicacies made from freshly caught ingredients like fish, shrimp, shellfish, crabs, and more.
3. Lat Nod Canal Rafting: Go wet rafting along the Lat Nod canal and visit numerous points of interest along the way.
4. Glimpse into the lifestyle of local fishermen and how they sustain ocean life for consumption
5. Mangrove Tree Planting
6. Laem Son Cultural Monument: Surrounded by white sandy beaches and clear water, this group of islands is in the vicinity of Laem Son Cultural Monument.



Sustainability highlights

The community runs a community-based tourism for environmental preservation. Community members participate in providing tourism activities. Tourists will see how the community preserves its natural and environmental resources through tourism activities.

CONTACT

Name: Khun Preecha Hutchak

Address: Muang Kluang Subdistrict, Kapoe District,
Ranong 85120

Phone Number: +66 87 885 7965 , +66 89 075 5345

Source:

<https://cbtthailand.dasta.or.th/webapp/community/content/51/>

BANG RONG COMMUNITY PHUKET PROVINCE

LOCATION

Bang Rong community is located in Thalang district, Phuket province. It is an agricultural tourism community which is full of natural and environmental resources.

The Highlights of Community

Agricultural activities such as visiting Bang Rong Agricultural Conservation Tourist Center, visiting a goat farm and pineapple farm. Visitors can play a part in environmental conservation through learning about mangrove trails and planting trees.

CBT ACTIVITIES

1. Explore Ban Bang Rong Agricultural Conservation Tourist Center
2. See goat raising and milking; then taste fresh goat milk
3. Visit pineapple farm of Phuket and lunch at the community kitchen
4. Enjoy studying the most abundant mangrove trail
5. Planting trees for CSR activity
6. Purchasing pineapple products from the community

Sustainability highlights

The community is willing to use tourism as a tool for agricultural conservation by adding value to pineapple as local products such as juice, cookies, lotion, soap, and so on. The community has a website for selling those products. So, everyone can purchase and the community members will have income from selling products.

Furthermore, the community develops a low carbon tourism route and activities which tourists can learn and be a part of environmental conservation with the community. This will lead to sustainable tourism and well-being for the community.

CONTACT

Email: bangrong.cbt@gmail.com

เว็บไซต์: <http://www.bangrongconnect.com/>

Facebook: https://web.facebook.com/cbtbangrong/?locale=th_TH&_rdc=1&_rdr

Name: Mr. Prasert Rittiraksa

Address: Pa Khlok Subdistrict, Thalang District, Phuket 83110

Phone Number: +66 94 714 8707 Email: bangrong.cbt@gmail.com

Website: <http://www.bangrongconnect.com/>

Facebook: https://web.facebook.com/cbtbangrong/?locale=th_TH&_rdc=1&_rdr

Source:

<https://cbtthailand.dasta.or.th/webapp/relattraction/content/1881/>

PHUKET OLD TOWN COMMUNITY PHUKET PROVINCE



LOCATION

Phuket Old Town is home to Sino-Portuguese architecture that has remained till today. There is a specific culture called "Peranakan", tracing the prosperity during the reign of King Rama V, with Phuket Thai Hua Museum that brings together the stories of the Old Town and the way of life of the Chinese immigrants who do mining.

The Highlights of Community

Phuket people's way of life is forged from a variety of cultures, including Chinese, Malay, and Thai, creating a unique way of life.

Visitors can see remarkable architecture, taste delicious traditional flavored food. Hot fried Hokkien noodles is one such example of the food attraction. Other local foods such as Owtaw, Laba, and Oh Aew are all unusual and tasty. These are the charms for the tastebuds that are guaranteed to fascinate any tourists that come to visit.

CBT ACTIVITIES

1. Ban Kao Museum: Built with Sino-Portuguese architecture, it tells its history through the décor of the house, both Italian tiles, Chinese furniture, and tables from Penang. It shows the brilliance of trading in the past.
2. Wat Mongkol Nimitr: Wat Mongkol Nimit or Wat Klang Phra Aram Luang, Tri Level, General Type is an important temple of Phuket, was built in 1880.
3. Saeng Tham Shrine: is an old shrine located in the heart of Phuket. It has had beautiful architecture for over a hundred years.
4. Phuket Thai Hua Museum is a museum that tells the history of Chinese ancestors who migrated to Phuket.

Sustainability highlights

The community is very professional and well-prepared for tourism management to present the culture and local lifestyle through food, architecture, and performances. Tourists will experience the charm of Phuket Old Town thanks to the local people. Gastronomy tourism is outstanding for food lovers with taste and storytelling. Travellers can stay assured that when visiting the community, they can be a part of community-based tourism.

CONTACT

Email: rusmakhan99@gmail.com

Facebook: <https://www.facebook.com/oldphukettowncvt/>

Name: Khun Somyot Pathan

Address: Talat Yai Subdistrict, Mueang Phuket District, Phuket 83000

Phone Number: +66 84 305 3960 Email: rusmakhan99@gmail.com

Facebook: <https://www.facebook.com/oldphukettowncvt/>

Source:

<https://cbtthailand.dasta.or.th/webapp/community/content/65/>



BAAN BANGTAO COMMUNITY PHUKET PROVINCE

LOCATION

Baan Bangtao, Choeng Thale sub-district. Bangtao has all the beautiful natural features; mountains, waterfalls, and a beach with fine white sand. This location is quite peaceful and private and is suitable for relaxation. Mostly, people in the village still work in the indigenous professions such as agriculture, rubber plantation, fishery, livestock, raising goats and cattle. The ethnicities and religions of people in Bangtao are quite diverse. There are Muslims, Buddhists, Christians, and Hindus. Even though they're from different backgrounds and cultures, they are quite united, honor each other, don't discriminate each other, and live peacefully together in the Baan Bang Tao community.

The Highlights of Community

Bangtao Choeng Thale sub-district has many interesting travel attractions, including mountains, waterfalls, cultural tourism, and the beautiful sea. Bang Hod, or Mr. Manos Ngankhaeng's goat farm, is another renowned occupation in the community. It's a family business. His goats have received many awards, including the royal award from Her Royal Highness Princess Maha Chakri Sirindhorn for several years. Moreover, there is a long-tail boat club at the beach that organizes integrated tourism with traditional fishing. Generally, there is fresh fish almost every morning at the beach front. The villagers will make the sun-dried fish to preserve the leftovers after selling or consuming them. It's a popular product of Bangtao. The fish from the Ban Bangtao fishery tastes different from other places because it's close to the Andaman sea.



CBT ACTIVITIES

1. The Mukaram mosque. It is the most beautiful and important mosque in Phuket.
2. Explore the local agriculture at the rubber tree plantation.
3. Visit Nua-Tone waterfall
4. Join the women's group cooking the local food and desserts such as Khao Yam (rice salad), A-pong, champedak cake, pineapple cake, and steamed sticky rice wrapped with coconut leaves, which are the traditional cuisine.
5. Experience the atmosphere of Bangtao by taking a long-tail boat to Waek Island.
6. Purchase souvenirs such as sun-dried fish, goat milk soaps, tie-dyed dye clothes and other herbal products.

Sustainability highlights

The Bangtao community has 14 groups of occupations registered as community enterprises. Some groups focused on upstream production and farming. This shows the community participated in tourism, earned money, and distributed tourism income to all groups in the community. With the concept of "Secure, Prosperous, and Sustainable", the community created sustainable development and contributed to the economic development of the community.

CONTACT

Name: Khun Sontaya Kongtip

Address: Choeng Thale Sub-District, Thalang District, Phuket, 83110

Phone Number: +66 62 228 7896

Source:

<https://cbtthailand.dasta.or.th/webapp/community/content/1320/>

BAN KHA NAEN COMMUNITY COMMUNITY PHUKET PROVINCE

LOCATION

Baan Kha Naen Village is an old village dating back to the Ayutthaya period, which has a proud history of Thai heroines Thao Thep Krasattri and Thao Sri Sunthorn, who battled with 9 Burmese armies. This happened during the beginning of the reign of King Rama I, and deeply influenced local culture and way of life.

The Highlights of Ban Kha Naen Community

Experience the legendary local dance culture of 'Nora' dancing, which has been simplified and brought to a new audience, for health and exercise, through 'Narobics!'

CBT ACTIVITIES

1. Nora dance station, there is an applying of Nora Dance and converting to the simple exercise called Norabic.
2. Visit the ancient Thai house station, a simple house that has some space under the house with 2 stories where the upper story is for the bedroom and the lower story is for the living room and the working room.
3. Visit the weaving station, there are activities for weaving Thai fish, rattan ball, bird, snake, and grasshopper. There are rice milling and Thai traditional playing stations as well.
4. Local food and dessert stations where tourists can cook coconut-rice pancakes and Somtam of Phuket. There will be local people to guide how to do those activities in each station.

Sustainability highlights

The community is willing to preserve the cultural identity of Nora dance and develop into the simple exercise called Norabic. This is a valuable thing that the community can preserve and pass on to the younger generation as well as anyone who is interested in this kind of traditional performance.

CONTACT

Email : talang-culture-village@hotmail.com

Facebook: <https://www.facebook.com/profile.php?id=100069336751212>

Name: Khun Thanyalack Jariyalrpong

Address: Thep Krasattri Subdistrict, Thalang District, Phuket 83110

Phone Number: +66 81 895 6864 Email: talang-culture-village@hotmail.com

Facebook: <https://www.facebook.com/profile.php?id=100069336751212>

Source: <https://cbtthailand.dasta.or.th/webapp/community/content/63/>



BAN KHOK KHRAI COMMUNITY

KRABI PROVINCE

LOCATION

Ban Ban Kok Khrai community is a small, charming fishing village, situated in Marui subdistrict, Thap Put district of Phang Nga province. Aside from a fantastic view of the ocean, visitors can also experience traditional ways of fishing together while admiring the wonderful nature. In the past, it was a Muslim community of 320 households, where people were mainly involved in fishing and by using a system of dependence, everyone would help each other to screen those fish for selling. In 2008, there was a gathering of about 70 locals forming a community enterprise for developing tourism activities.



The Highlights of Ban Khok Khrai Community

A key highlight is a mud spa, wellness activity. This comprises of several steps: The first one is to keep pacing on the warm sand to stimulate blood flow and circulation. The second step is mud masking. The mud used in the spa is dug from peat 1-meter deep underneath the ground since it is the cleanest and the most beneficial mud. Once the mud is completely dry, it is washed off with lukewarm water and then again with clean freshwater. This activity is open for the visitors all year round; nevertheless, it can be done only for 10 days in a month during low tide.



CBT ACTIVITIES

1. Relax and Chill Out in a Mud Spa at Nam Ron Beach
2. Source the Best Ingredients from the Sea
3. See the unseen Red Land Crabs: At Tang Lane Beach, it is time for an army of more than ten thousand red land crabs to find some food. A cast of red crabs is not a sight you can see every day.
4. Taste Delicious and Famous Local Dishes: There are a variety of OTOP products under the brand "Sab Samut" such as hand-made chili paste, hand-made shrimp paste, and Thai herb roasted shrimps.

Sustainability highlights

This small village has turned local fishery into sustainable incomes since 2008. There was a gathering of about 70 locals forming a community enterprise to develop tourist attractions. For almost 9 years, the Ban Khok Khrai tourism community has been slowly developing. Ban Kok Khrai Production Promotion Women Group has sourced the best local ingredients and processed them into OTOP products under the brand "Sab Samut" which are quality-guaranteed and additionally, they generate incomes to the community.

CONTACT

Email : sompon.kct@gmail.com

<https://www.facebook.com/kokkrai.cbt>

Name: Khun Somphon Sarakarn

Address: Marui Subdistrict, Thap Put District, Phangnga 82180

Phone Number: +66 87 886 0465

[Fabapp/community/content/59/](https://www.dasta.or.th/th/article/392)

<https://www.dasta.or.th/th/article/392>

BAN SAM CHONG NUEA COMMUNITY

KRABI PROVINCE

LOCATION

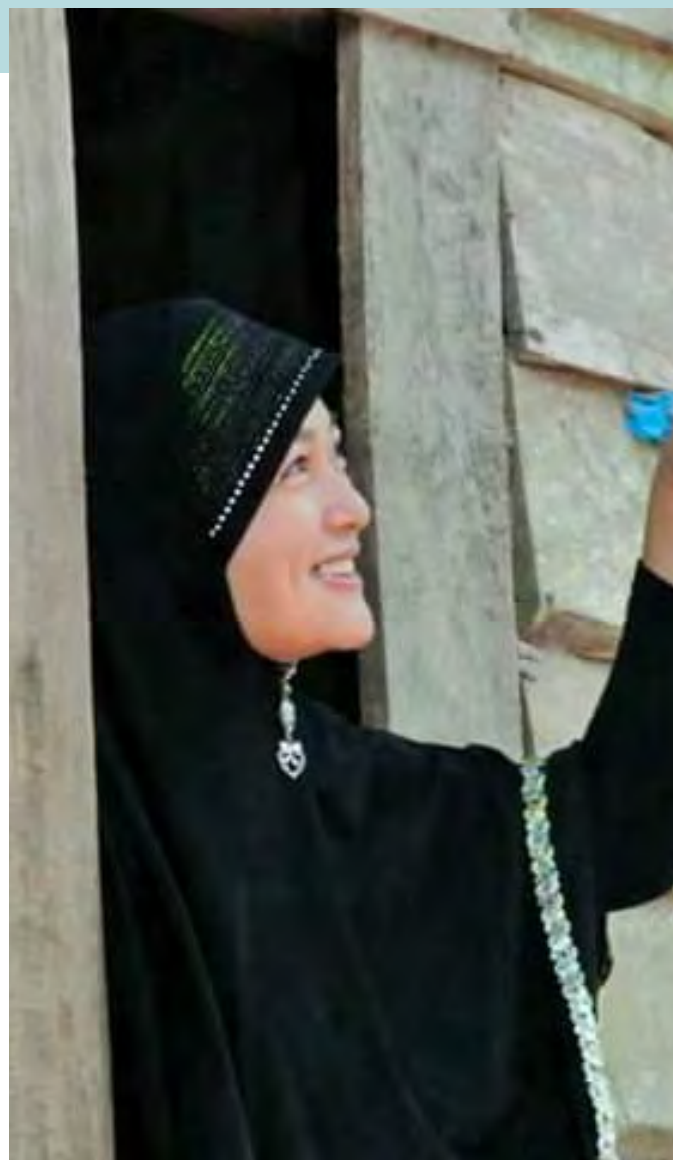
Ban Sam Chong Nuea community is located at Moo 9, Kalai sub-district, Takua Thung district, Phang Nga, on an island known as a fishing village, and where most of the population is Islamic. Ban Sam Chong Nuea is formerly known as Thap Nua. 'Thap' means a temporary residence for fishermen. Later in 1914, the village's name was changed to Ban Sam Chong Nuea. According to the origin of the three canals that flow through the village, namely Khlong Bang Lam, Chiang Mai Canal and Khlong Ta-jo that flow together is called "Khlong Sam Chong". Ban Sam Chong Tai is a village separated from Ban Sam Chong Nuea. There are many people constantly migrating to the south.

The Highlights of Community

Relaxing while kayaking to see the nature of the mangrove forest that is still abundant and a large aquatic nursery that is important in the ecosystem. Learning about the local fishery and tie dye cloth making with a unique pattern.

CBT ACTIVITIES

1. Kayaking and visiting Ecosystem Mangrove Forest
2. Reforestation activity by plant mangrove forest in Phang Nga Bay area
3. Tie Dye Cloth Making: Hand on to weave tie-dye fabric from material in mangrove forest. The community has developed tie-dye fabric to value-added products such as hats, bags and scarves.
4. Shrimp Paste Process Demonstration
5. Visiting Fish and Oyster Farm, Tasting a Fresh Oyster
6. Shell Conservation Bank



Sustainability highlights

This is a fishery community which uses tourism as a tool for natural conservation and local product development. The community develops their local identity through creative tourism activity. This can create more value and income to the community. Tourists will learn and experience local lifestyles including preserving local wisdom through tourism activities with local people.

CONTACT

Email: suratsumalee@gmail.com

Facebook: <https://www.facebook.com/baansamchongnuea>

Name: Khun Surat Sumalee

Address: Kalai Subdistrict, Takua Thung District, Phangnga 82130

Phone Number: +66 86 741 7949 Email:

suratsumalee@gmail.com

Facebook: <https://www.facebook.com/baansamchongnuea>

Source:

<https://cbtthailand.dasta.or.th/webapp/community/content/60/>

<https://www.dasta.or.th/th/article/1290>



BAN NA TIN COMMUNITY

KRABI PROVINCE

LOCATION

Ban Na Tin Muslim Cultural Tourism Community is located at Moo4, Ao Nang Subdistrict, Muang Krabi District, Krabi province. Originally, this area was full of rice fields. Locals have been involved in farming for a very long time, and each farm was located in “Pla Tin” which means the north of the big house, so people called this village “Ban Na Tin”.

The Highlights of Ban Na Tin Community

Learning the local way of life such as coastline fishing, rubber plantations, coconut farming and others. There are also many unique handicrafts including local style batik, boat model, bracelet, necklace, coconut shell products, etc.



Sustainability highlights

The beginning of the local group leading to the tourism community started with their local wisdom in handicrafts. They gathered people interested in making some extra income by making some souvenirs to sell to tourists. The community established homestays in July 2001. For 17 years, community leaders and locals have continually improved their own community and developed the tourism plan for accommodating tourists which works until this day.

CBT ACTIVITIES

1. Taking a Boat To See Local Fisheries: to experience the livelihoods of local fishermen of Ban Na Tin, such as shrimp netting, squid and lobsters trapping
2. Rubber Tapping Demonstration: experience the lifestyle of southern villagers, from the early morning rubber tapping , rubber processing into rubber cubes or rubber sheets for selling.
3. Souvenir Making from Coconut Shell
4. Batik Painting Workshop: Demonstration of batik making which is a community product with a unique goat pattern. This pattern is applied to other products such as handbags, or handkerchiefs.
5. Khanom Tum Prong (sweets) Cooking Class
6. Stay a night with local people at a homestay
7. Visiting Pornoh Krudia Muslim Learning Center (Ban Klong Son)



CONTACT

Name: Khun Bancha Kwaenglhee

Address: Ban Na Teen, Ao Nang Subdistrict, Mueang Krabi District, Krabi 81000

Phone Number: +66 81 968 8532

Facebook: <https://www.facebook.com/profile.php?id=100075911997502>

Source:

<https://cbtthailand.dasta.or.th/webapp/community/content/57/>



LAEM SAK COMMUNITY COMMUNITY KRABI PROVINCE

LOCATION

Laem Sak is a small community with a rich cultural identity blending Thai-Buddhism, Muslim, and Thai Chinese. Laem Sak is a fishing community with beautiful seas and naturally fertile, highly abundant marine resources. Moreover, it is well-known for orchids.



CBT ACTIVITIES

- 1 Experience the Crossroads of Cultures: Thai Buddhist, Thai Muslim, and Thai of Chinese descent (Baba Yaya). At Three cultural intersections, which are routes to the three cultural symbols located closely: Wat Mahathat Laemsak (Thai Buddhist), Solahudeen Mosque (Thai Muslim), Sok Po Si Eir Shrine (Baba Yaya).
2. Explore Than Bok Khorani National Park: consists of mountains, mangroves, evergreen forests and islands.
4. Blue House - The Symbol of Ban Laem Sak Tourism Community: The Sino-Portuguese architectural building represents the culture of Baba Yaya or Peranakan
5. Khanom Ko Sui Cooking Class at Blue House: is a traditional Chinese dessert consisting of rice, tapioca starch, arrowroot starch, brown sugar, white sugar, salt. First, you mix everything and put it in a Talai bowl. Then, steam for about 20 minutes. The gosui dessert must be eaten with grated coconut, making it incredibly mellow.
6. Try your hand at a Batik Painting Workshop



The Highlights of Laem Sak Community

Laem Sak is a community with a unique identity which is surrounded by the sea from 3 sides, with a 360 degrees mountain view! Limestone sea karsts soar out of the sea. The highlight of the journey is a boat trip, which reveals local stories and allows visitors to see the way of life in this community.

Sustainability highlights

The community is concerned about environmental conservation. They set up an ecotourism group called Laem Sak Tourism. Local community groups work in processing products and trading them to earn extra income for their family. It is a community that puts great emphasis on cherishing their precious natural resources. Cultural preservation is important to the community as well. The community uses tourism as a tool to preserve their culture through food, handicraft, architecture, etc.

CONTACT

Email : laemsakcvt@gmail.com

Facebook: <https://www.facebook.com/LaemsakCBT>

Name: Khun Chanrit Permsarb

Address: Ao Luek Tai Sub-District, Ao Luek District, Krabi 81110

Phone Number: +66 89 997 8915 Email:

laemsakcvt@gmail.com

Facebook: <https://www.facebook.com/LaemsakCBT>

Source:

<https://cbtthailand.dasta.or.th/webapp/community/content/54/>

LOCATION

Huay Pu Keng is a small village, tucked away in the lush mountains of Mae Hong Son, Thailand with forested trails, rivers and scenic viewpoints that can be enjoyed easily. There are two ways to access the village: Through the hilly jungle via neighboring Karenni village Huay Sua Thao and by boat via the Pai river.

CBT ACTIVITIES

The villagers offer a number of interesting workshops and activities.

1. Weaving a headband
2. Cooking workshop
3. Traditional dance workshop
4. Carving a bracelet, spoon or ring from wood
5. Kayan doll wood carving
6. Making a small boat
7. Make a cup, bottle or bell from bamboo
8. Making a brass ring or bracelet
9. Playing traditional musical instruments
10. Agricultural activities, like mushroom hunting
11. Rice pounding
12. Tree planting
13. Medicinal plants hike



HUAY PU KENG COMMUNITY MAE HONG SON PROVINCE



The Highlights of Huay Pu Keng Community

The people are the highlight of Huay Pu Keng. Their Karenni culture is full of interesting crafts, beautiful clothing and wonderful stories. The Kayan are a subgroup of the Karenni and with their looks (these women are known for their long necks with brass rings) they draw many visitors to the community. As a bonus, the community is surrounded by gorgeous nature with several forested trails, rivers and scenic viewpoints.

Sustainability highlights

The sustainability highlight of the community is cultural preservation. The community preserves the Karenni cultural identity through festivities and tourism activities. Huay Pu Keng is also concerned about environmental sustainability as all the electricity comes from solar panels.

CONTACT

Name: Aye Maung

Address:

Phone Number: +66 93191 2920

Facebook: <https://www.facebook.com/aye.maung.54>

Source: <https://www.fairtourism.nl/en/kayan-thailand-en-2/>

